

FAQ Understanding easements



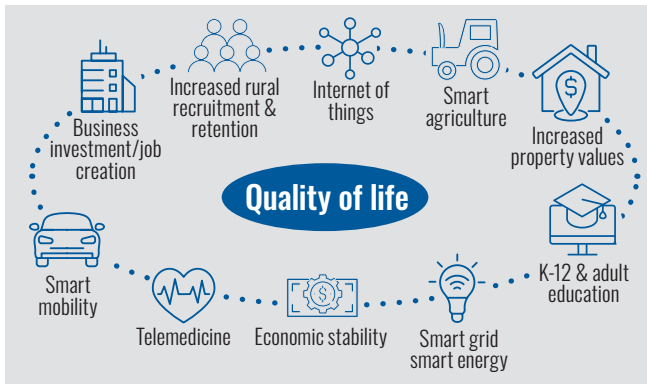
Shelby Electric
Cooperative
Your Touchstone Energy® Cooperative



ShelbyFiber
Connecting you. Faster!

1 What is fiber internet?

Our 100% fiber-optic network consists of a series of small glass strands contained in a protective black jacket which transmit information in the form of light at speeds faster than any other service type. This fiber internet service will provide our rural members access to much needed fast, future-proof and reliable internet connections. The many benefits of rural fiber broadband are described below.



2 What is an easement?

An easement is a right authorizing a person or party to use someone else's land or property for a particular purpose. In this instance, Shelby Electric Cooperative, requires an easement to build a new fiber-optic network to serve homes, businesses and farms. The easement is a legal document and must be signed and notarized.

3 Why am I signing a new easement, when you already have an easement for your utility assets?

We need to update our existing easement with a new one since most existing utility easements do not have fiber/communication language included.

4 Why is signing my easement important?

Cooperation is key to ensure fiber-optic construction to your rural neighbors. Easements allow workers to access your property to install, upgrade and repair the fiber lines as needed. Without an easement in place, significant delays will occur in getting much-needed fiber broadband service to your neighbors and to those who need it most such as emergency services, school children, remote workers, small businesses and farms.

5 Why do I need to sign an easement, when you are installing the fiber in the road right-of-way?

The road right-of-way (ROW) is applicable to road-use purposes only. Additionally, the property owner typically owns to the center line of the road. Therefore, any public utilities installed in the road ROW require an easement from the property owner.

6 Where is the mainline underground fiber optic cable installed on my property?

The fiber optic lines will be installed within the road right-of-way at a target depth of 36". Construction design criteria are developed specifically to minimize any adverse impact to your property or farming operations. This is why road ROWs are a preferred route.

7 Will there be any above ground facilities required to complete the fiber optic underground installation?

On some properties, there will be a narrow plastic triangle marker next to fiber handholes (small flush mount vaults used to facilitate underground splice enclosures—traffic-rated where applicable). These markers are installed to indicate fiber facilities to the public and so locator crews can easily access and locate the underground fiber pursuant to Illinois' one-call system JULIE (8-1-1). If you notice this facility damaged or tampered with, simply call the co-op so adequate repairs can be promptly addressed.

8 Where is the mainline aerial fiber optic cable installed on my property?

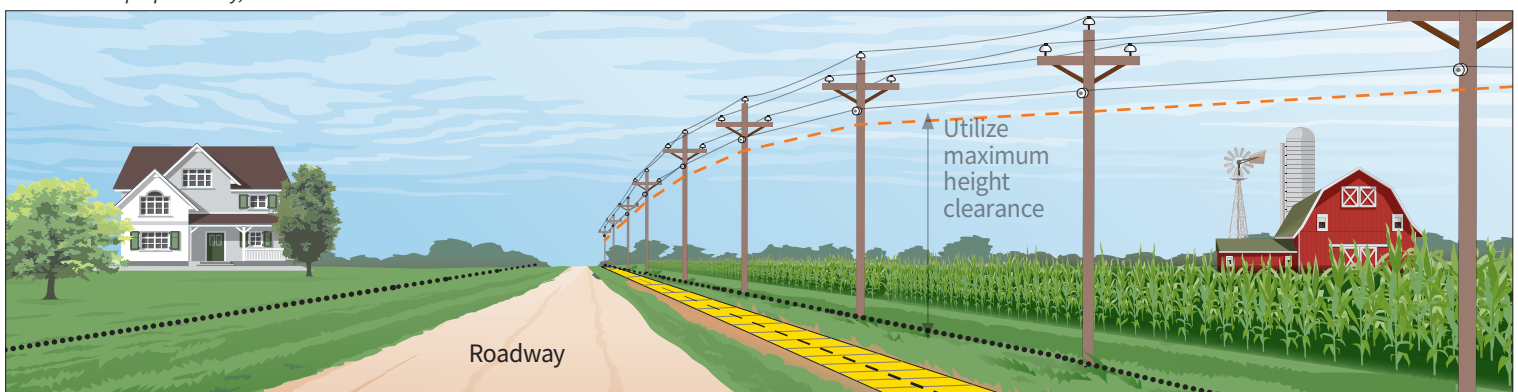
Aerial fiber optic lines will be installed on co-op owned poles at National Electric Safety Code (NESC) clearances. The co-op utilizes a di-electric aerial fiber that allows maximum attachment heights much higher than traditional communication lines (e.g. telephone, cable TV). Construction design criteria are developed specifically to minimize any adverse impact to your property or farming operations.





9 Am I required to have an easement for the fiber drop to my home, business, or farm?

No. Easements are not required for fiber drops as these facilities are installed specifically to serve a premise at the owners request.

Easement examples

For illustration purposes only, variances will be discussed with individual landowners.



 Requested underground easement area  Underground fiber installation  Existing road ROW  Aerial pole installation