

Cooperative scholarships available!



It is that time of year again when high school seniors start their final semester, decide where they want to attend college, and how they are going to pay for it. There are various types of scholarships available to help relieve some of the financial burden.

Shelby Electric Cooperative (SEC) will once again be awarding three academic scholarships in the amount of **\$1,000** each. Eligible students must be sons or daughters of any current SEC member who is receiving electric service from the cooperative at the time the scholarship application is submitted. Students must be high school seniors pursuing a college education in the United States.

These **\$1,000** scholarships may be used for educational costs at any two-year or four-year accredited college or university, including vocational/technical schools. Recipients are chosen based on academic and community accomplishments, character, and financial need as demonstrated in the application and essay process. **Wednesday, March 4** is the deadline for receipt of the completed applications. The three scholarship winners will be notified in May and announced at the cooperative's Annual Meeting of Members on Friday, June 5.

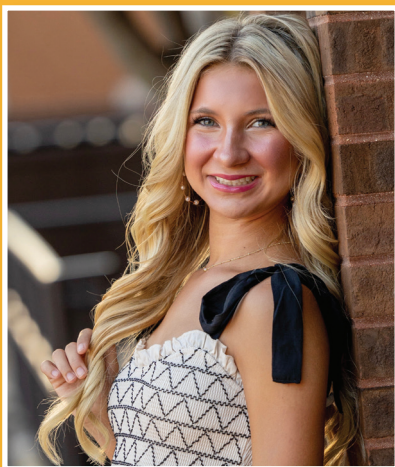
In 2025, the recipients were Alivia Kent of Taylorville, Jack McClain of Shelbyville, and Nellea Polley of Taylorville. "We are pleased to be able to provide these outstanding students with a scholarship as a way to give

back to the communities we serve," said Faith Wheeler, who coordinates this program for the cooperative.

Applications, official rules, and complete guidelines can be found by visiting SEC's website, shelbyelectric.coop, and clicking on the "Community" tab, or scanning the QR code on this page. They are also available from area high school guidance counselors. Please call the cooperative at 217-774-3986 if you would like additional information about this scholarship opportunity.

Previous winners offered these tips for filling out scholarship applications: Apply for as many scholarships as you can; list all your high school accomplishments, as well as activities outside of the classroom; always have someone proofread your essay; and make sure you accurately and effectively communicate who you are. If you have not started filling out scholarship applications, what are you waiting for? **Deadlines are fast approaching so do not delay!**

Scan QR code
for full details



2025 scholarship recipients were, left to right, Alivia Kent of Taylorville, Jack McClain of Shelbyville, and Nellea Polley of Taylorville.



Paying the bills

Phoebe Kates retires from the cooperative!

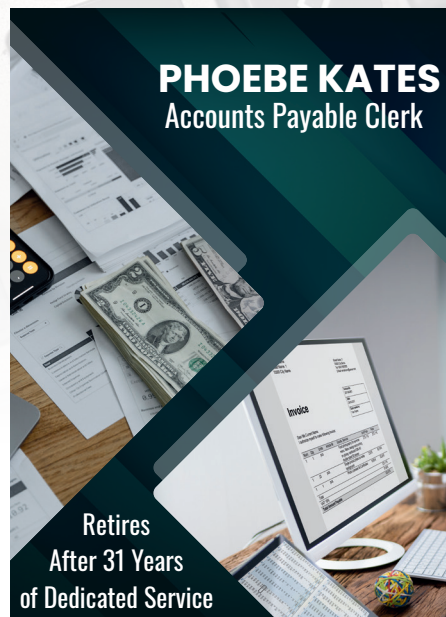
For many of us, paying the household bills is something we take care of or share in that responsibility. Whether it be monthly car, home, rent, credit card, or college debt payments, we have someone who makes sure those bills are paid. At Shelby Electric Cooperative, Phoebe Kates was that person and she is retiring from the cooperative this month.

Phoebe was hired as Accounts Payable Clerk in September 1995. In that position, she was responsible for paying all the invoices that were

submitted to the cooperative from suppliers, vendors, sponsorships, and other utility providers.

What does retirement look like? She hopes to spend time volunteering, spend more time with her grandchildren, and well, still pay some bills — however, just her own.

Phoebe wanted to end her career quietly and without fanfare, but we felt we should say thank you to her for 31 years of dedicated service in a position that is vital to the operation of the cooperative. Thank you, Phoebe!



Did you know you can pay your Shelby Energy Company bill online and do so much more? Visit our website, shelbyenergyco.coop, to get started today. Just click on the Customer Account login tab. If you have questions or need help, give us a call at 217-774-2311.

SHELBY News

**P.O. BOX 560
Shelbyville, IL 62565**

**Phone: 217-774-3986
or 1-800-677-2612**

**Pay-by-Phone:
1-844-963-2859**

www.shelbyelectric.coop

X @YourCoop

f @YourCoop

@yourcoop_sec

**Office Hours:
Monday - Friday
7:00 a.m. - 4:00 p.m.**



WHEN SECONDS COUNT



Shelby Electric Cooperative is teamed up with Air Evac Lifeteam to offer air ambulance service memberships to rural residents. Air Evac members who use the Air Evac Lifeteam service for critical emergencies will not receive a bill for the flight no matter how many times a year they use it.

Cooperative members can have the \$5 monthly membership charge added to their electric bill. To learn more or download an application, simply scan the QR code or call the office at 217-774-3986 or 800-677-2612.



**Scan to
learn more**



Winter safety for outdoor workers

When the temperature drops, so does your body's ability to stay warm. Outdoor workers — and those who enjoy outdoor sports like hunting, fishing, or hiking — face added risks and must take extra steps to guard against frostbite and hypothermia.

Follow these tips and have a plan to stay safe when working outdoors:

- * Watch the weather. Monitor the temperature and wind chill. Take frequent breaks indoors to help prevent cold stress.
- * Stay warm and dry. Dress in loose, warm layers. Wear a moisture-wicking base, an insulating layer, and a protective flame-resistant/arc-rated (FR-AR-rated) outer layer if required for your job. Wear warm socks and waterproof boots. Remove any wet clothing as quickly as possible.
- * Protect your head and face. Use a hat, hood, or hard-hat liner. When required for your job, choose FR/AR-rated liners or balaclavas. Avoid bulky hats or loose scarves.
- * Keep your hands safe. Wear insulated gloves or mittens to guard against frostbite. If working with electricity, always use voltage-rated protective gloves with approved liners — never substitute regular winter gloves in place of necessary personal protective equipment (PPE).
- * Fuel your body. Drink warm fluids, stay hydrated, and eat high-energy foods.
- * Know the warning signs. Watch for frostbite (numbness, skin color changes) and hypothermia (shivering, confusion, slurred speech).
- * Be prepared on the road. Keep a winter emergency kit in your vehicle with blankets, traction aids, and extra PPE.

Recognizing frostbite

Frostbite happens when skin and tissue lose circulation and freeze, commonly affecting fingers, toes, ears, and nose.

Symptoms of frostbite

- * Numbness or tingling in the affected area
- * Skin that turns red, white, or bluish gray
- * Cold, hard, or waxy-looking skin
- * Stiff muscles and joints

Treating frostbite

1. If possible, move indoors to a warm place.
2. Warm the affected area with warm (not hot) water or place hands under armpits.
3. Avoid rubbing or massaging frostbitten skin, as this may cause further damage.
4. Seek medical attention for severe frostbite or skin with blisters.

Recognizing hypothermia

Hypothermia occurs when body temperature drops dangerously low.

Symptoms of hypothermia

- * Shivering
- * Confusion or slurred speech
- * Drowsiness or exhaustion
- * Slow, shallow breathing

Treating hypothermia

1. If possible, move indoors to a warm place.
2. Call 911 immediately, especially if the person is unconscious.
3. Provide warm fluids, avoiding caffeine, and alcohol.
4. Remove any wet clothing and warm the torso with layers of blankets or clothing.

Being prepared and recognizing symptoms can help you protect yourself from frostbite and hypothermia this winter.





Winter weather and your propane tank

Winter can produce some of the most magnificent scenery, but it can also be challenging. Accumulated snow and ice have the potential to damage your propane system. While you can not always predict snowstorms or hazardous weather conditions, you can take measures during and after winter storms.



Try to keep your propane equipment free from snow and ice.

Keep snow and ice from accumulating on propane equipment

Snow or ice accumulation can potentially cause parts of your propane system to crack or break, resulting in a gas leak. It is your responsibility to make sure that all propane pipes, valves, regulators, and tanks are clear of snow and ice. Gently brush away snow or ice that has accumulated around the tank, meter, regulator, and any other piping. Do this using a broom or by hand. If you must use a shovel, use extreme caution around all equipment. If you notice any snow or ice buildup that cannot be removed easily, contact your propane provider. **DO NOT** attempt to remove snow or ice by kicking or hitting any equipment.

Be alert to snow buildup on rooftops and other areas

Frequently check where snow or ice collects on your roof, structure, or nearby trees, and clear it if you believe it might fall on any part of your propane system. Never shovel snow off of roofs and onto propane equipment. Heavy accumulations of snow or ice falling on tanks, regulators, meters, piping, or valves may cause damage that could result in a gas leak.



Keeping your propane tank free from snow and ice will allow your propane provider safe and easy access to service your tank.

Keep vents clear

Appliance vents and chimney flues must **ALWAYS** be clear of snow or ice. Some homes may have “direct” vents, which are close to the ground. Improper venting can cause carbon monoxide to become trapped in your home, resulting in serious illness or even death.

Clear driveways and pathways to propane tanks

Please remember that a propane delivery truck needs at least a 10-foot-wide path to be able to deliver fuel to your home. Also, keep the tank area and

a path to the tank free of snow. When plowing, snow blowing, or shoveling, do not push or pile snow around your tank, meter, regulator, or piping.

Talk to your contractors

If you use a snow removal service, make sure that they know the location of all propane equipment on the property. Instruct them to keep their equipment clear of all parts of your propane system. If your snow removal service shovels snow off your roof, instruct them to never shovel snow onto any part of the propane system.

Propane safety tips



Shelby Energy Company

- Handle any propane-powered equipment cautiously and always follow the manufacturer's instructions.
- Cylinder tanks for equipment such as stoves and ovens must be located outside of the home.
- Never store or use propane gas cylinders larger than one pound inside the home.
- Never operate a propane-powered gas grill inside the home.
- Have propane gas equipment inspected periodically by a professional for possible leaks or malfunctioning parts.
- Carefully follow the manufacturer's instructions when igniting a pilot light.
- If you smell a strong odor of gas, leave the area immediately, call 911 from outside the home, and then call your propane provider.

Shelby Energy Company is an LP gas subsidiary of Shelby Electric Cooperative.

☎ 217-774-2311 | 🌐 shelbyenergyco.coop | 📱 @ShelbyEnergyCo