

Lineworker Appreciation Day

Lineworkers exhibit a toughness that goes far beyond just physical strength. Whether battling inclement weather, troubleshooting technical problems, or navigating treacherous heights, lineworkers demonstrate resilience and a quiet determination to keep our lights on, our homes comfortable, and our communities connected. Use **#ThankALineworker** on social media to show your support on **April 14** for Cooperative Lineworker Appreciation Day and on **April 18** for National Lineworker Appreciation Day!

THANK YOU

to our line personnel:

Manager of Operations

Terry Oldham

Construction Superintendent

Brian Chevalier

Operations Assistant

Amy Peters

Forestry Foreman

Luke Brown

Foremen

Andy McDonald

Blake Summers

Brad Wright

Fleet Manager

Craig Atteberry

Material Control Clerk

Marlow Stephens

Linemen

Dalton Brown

Tommy Campbell

Roger Jones

Blake Knearem

Jake Kull

Nick Ray

Adam Schrock

Jamie Sharp

Nick Sloan

Wes Matthews

Lucas Morse

Apprentice Linemen

Austin Bly

Wyatt Fox

Cade Helton

Adam Hudson

Jared Phelps

#THANKALINEWORKER



Prioritizing Safety

Cooperative recognized for outstanding workplace practices

Safety is paramount in the electric industry. To advance safety education and practices, lineworkers, supervisors, and warehouse personnel from electric cooperatives across Illinois gathered in Springfield for the annual Safety and Energy Conference held January 29-30. The event was hosted by the Association of Illinois Electric Cooperatives (AIEC).

The conference emphasized the importance of safety and leadership in the energy industry by providing participants with training and resources to ensure their well-being on the job. Sessions included discussions on active leadership, staying focused, and safe practices in the workplace.

During the conference, safety awards were presented to honor both individual and cooperative-wide commitments to fostering a safe work environment. Shelby Electric Cooperative

was recognized for its outstanding safety performance over the past year, receiving 2024 awards for Best Loss Time Rate and Best Incident Rate.

These awards underscore the cooperative's dedication to maintaining a safe working environment, exceeding industry safety expectations, and cultivating a proactive safety culture.

The Best Loss Time Rate Award is given to the cooperatives with the lowest number of lost work time due to workplace injuries, relative to the number of hours worked. It reflects a cooperative's effectiveness in preventing serious incidents that could keep employees off the job.

The Best Incident Rate Award recognizes the cooperatives with the



Receiving the awards for Shelby Electric Cooperative, pictured left to right, Line Foreman Andy McDonald, Manager of HR & Compliance Diane Bunton, Operations Assistant Amy Peters, and Construction Superintendent Brian Chevalier.

lowest overall number of recordable workplace incidents, including minor injuries. It highlights a commitment to maintaining a consistently safe work environment for all employees.

As the electric industry continues to evolve, safety remains a top priority. It ensures that the workforce can continue to serve communities efficiently and without harm. The AIEC celebrates the electric cooperatives and individuals that prioritize safety, consistently demonstrate leadership in safe practices, and foster a strong safety culture.

SHELBY News

**P.O. BOX 560
Shelbyville, IL 62565**

**Phone: 217-774-3986
or 1-800-677-2612**

**Pay-by-Phone:
1-844-963-2859**

 **www.shelbyelectric.coop**

 **@YourCoop**

 **YourCoop**

 **yourcoop_sec**

**Office Hours:
Monday - Friday
7:00 a.m. - 4:00 p.m.**

 **Shelby Electric
Cooperative**
Your Touchstone Energy® Cooperative 

SPRING OIL SALE

Farm Home Business

SAVE MONEY ON DRUMS, BUCKETS, AND CASES

**Chevron URSA Super Plus
15w40 in 55 gallon drums**

**Chevron 1000 THF Tractor
Hydraulic Fluid in 55 gallon drums**

SALE ENDS APRIL 25

CALL FOR SPECIAL PRICING 217-774-2311



Faith's

ROADTRIP



A bintastic idea

At 10 p.m., after being in the field all day, Daryl Keiser comes home just in time to head to his second job as owner, operator, and “parts packager” at Keiser Covers. He meets his wife Deborah out in their shed (which serves as their warehouse) and together they begin packaging orders to be shipped out.

Ever since he was a kid, Daryl has worked on his three-generation family farm. “I started by working with my dad when I was a kid. It’s all I’ve ever done, and all I ever wanted to do.” One day in 2008, Daryl was doing the tedious task of sweeping his grain bins out, which is something every farmer looks forward to, and suddenly he had a realization. “As you are sweeping, there are bolts every 9.5 inches that you hit, which can cause your broom to break. I thought to myself that there has got to be an easier way to do this,” he laughed. So, the wheels started turning, and the initial thought of Keiser Covers was created.

Using his own 36-foot grain bin as a beta test, Daryl began the first installation of the covers. “The first prototype I made was from galvanized steel, and I had to bend every piece by hand. When you began the installation, each piece had to be stepped on and screwed down,” Daryl said. “It wasn’t the easiest process, so I dropped the idea for several years.”

Fast forward a few years, and the idea was still circling in Daryl’s brain. “One day I was doing a beta test for a corn head and had an engineer riding with me in the

combine. So I asked him how to get connected with someone to help me manufacture a product,” Daryl said. “He gave me the phone number of a manufacturer in Garner, Iowa, and the rest is history. We’ve been working with them ever since.”

In 2016, Daryl received a patent for the covers.

“Once we started working with the manufacturer, they had an idea to change the material from steel to poly, which has worked out great!” he exclaimed. “We had to tweak the cover about four or five times until we got what we wanted. The finished product has a slot wide enough to accommodate all the popular brands of grain bins such as Sukup, GSI, Brock, and Golden Grain,” Daryl said.

The installation process is very straightforward. You need to set the flashings out in the sun for a bit, which helps make them more pliable. You install them in a clockwise rotation with self-tapping screws that are included in the kit. Once completed, you go back counterclockwise and tighten all the screws.

Daryl can be found each year at the Farm Progress Show, where he promotes his product. “My



Keiser Covers Owner/Operator Daryl Keiser holding up two pieces of his invention.

son-in-law challenges each farmer to do a one bin challenge,” Daryl laughed. “Basically, the challenge is to install the covers in one bin, and then you’re hooked, wanting a set in every bin.”

Keiser Covers officially started selling their product in 2018 and has sold 20,000-30,000 pieces since then. The covers have been sold all over the country, including South Dakota, North Dakota, Texas, and in Canada as well.

Daryl and Deborah still live in Nokomis on the family farm and keep busy with their kids, grandchildren, and, of course, Keiser Covers.

If you are interested in learning more about Keiser Covers, visit their website at keisercovers.com. They can also be reached by phone at 217-820-0968 or email at keisercoversllc@gmail.com.

Thanks for riding along. I’ll see you down the road!

Employee News

The cooperative would like to congratulate Austin Bly, who recently became an Apprentice Lineman. He was originally hired in April 2022 as a Broadband Technician with PWR-net internet. In May of 2023, Austin moved from PWR-net to assist the line crews as summer help and from there he accepted a full time position as a Laborer in the Operations Department.

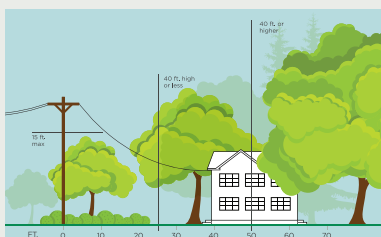
Keep up the hard work, Austin!



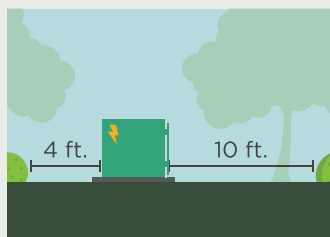
3 Ways to Help Limit Tree Trimming

Did you know electric utilities are required to trim trees and other types of vegetation that grow too close to overhead power lines? We know you love your trees, and we do everything we can to avoid trimming them. Here's how you can help:

1. Plant the right trees in the right place. Trees that will be <40 ft. should be planted at least 25 ft. away from power lines and trees that will be >40 ft. should be planted at least 50 ft. away.



2. Don't block pad-mounted transformers. Plant shrubs at least 10 ft. away from transformer doors and 4 ft. from transformer sides.



3. Report dangerous branches. If you spot a tree or branch that is dangerously close to power lines, please let us know.



**Let's work together to enjoy the beauty.
Trimming improves safety and reliability for all.
Contact the cooperative at 1-800-677-2612.**



**Shelby Electric
Cooperative**
Your Touchstone Energy® Cooperative 



Cooperative offices will be closed on
Friday, April 18
in observance of Good Friday.